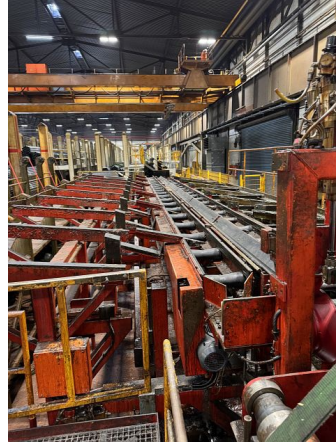


Data Sheet

Reference No.: 47433

Boru çekme makinesi

Brand: SALZGITTER MANNESMANN
Model:
YoM, approx.: 2010 used
Reconditioned:
Controls: SPS (hafızaya alma, toplama programlı) kontrol SIEMENS S7



Feedstock Tube

external diameter min.:	22 mm
Dış Çapı maks.:	55 mm
wall thickness min.:	1 mm
wall thickness max.:	3 mm
length min.:	5000 mm
length max.:	10000 mm

Product (profile, tube)

external diameter min.:	15 mm
Dış Çapı maks.:	45 mm
wall thickness min.:	0.8 mm
wall thickness max.:	2.8 mm
length min.:	7000 mm
length max.:	16000 mm

Characteristics Drawing Machine

force:	300 kN
number of parallel trains / strands max.:	3
speed max.:	30 m/min
drive system -drawing machine-:	chain
Ana Motor Gücü:	110 kW

ELEKTRİK DEĞERLERİ

Enerji sarfiyatı (toplam):	140 kW
Bağlantı Voltajı:	460 V
Frekans:	60 Hz

Additional Information:

Drawing machine BRESCIANI S.A.

- 3 strands
- drum magazine, manually loaded
- chain new in 2018

Pipe pointing machine HAGINGER AHM 63 with slide insertion device S

- Pipe diameter 20 - 70 mm
- Wall thickness 1 - 6.5 mm
- Pipe length 3,000 - 10,000 mm
- Material: Steel tubes with a strength of 800 N/sqmm
- Max. forming force: 4 x 630 kN
- Stroke rate: 630/min
- Drive motor power: 30 kW

Slide insertion device 'S'

- Infinitely variable feed speed: 0 - 100 mm/s
- Carriage stroke max.: 600 mm
- Speed of the clamping head (infinitely variable): 0 - 50 /min
- Insertion force: 2.0 KN
- Power of the hydraulic unit: 7.5 KW

SEMA cross chain conveyor.

Seller:

ProdEq Deutschland GmbH Standort Hückeswagen
Thomas Berger
Weberweg 2, 42499 Hückeswagen, Germany
+49 2192 935 382
thomas.berger@prodeq.de

Photos & Documents

Reference No.: 47433

